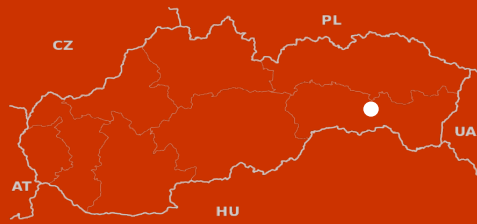
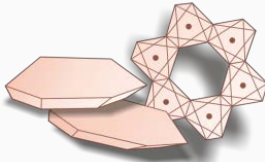


KOŠICE



REGION IN PICTURES



MECC 2016

Košice, the second largest city in Slovakia of about **240 000** inhabitants and the metropolis of Eastern Slovakia, is lying in the valley of the River Hornád near the Slovak Ore Mountains.

Košice is a city with a rich and glorious past. The first written reference to it, as the royal village - Villa Cassa, comes from 1230. In 1347, it became the second place city in the hierarchy of the Hungarian free royal towns with the same rights as the capital Buda.

Košice has been awarded the prestige title of European Capital of Culture 2013.

The town has extensive railway connections and an international airport with direct flights from/to London, Vienna and Prague. Direct bus connections operate from/to Budapest Ferenc Liszt International Airport (260 km).

CONFERENCE VENUE

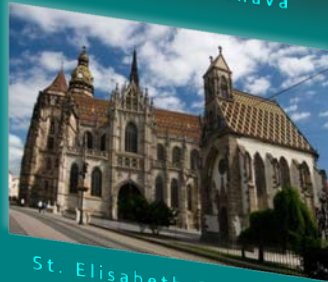
Conference will take place in the hotel **YASMIN** located in the walking distance to the town historical centre. The hotel disposes of multifunctional conference rooms with modern technical equipment.



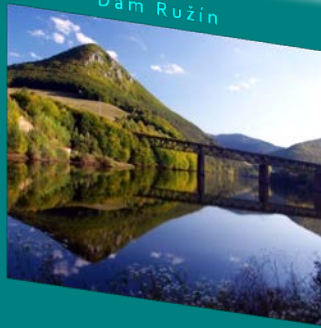
Zádielska tiesňava



State Theatre



St. Elisabeth Cathedral



Dam Ružín



HOTEL YASMIN****



Tyršovo nábrežie 1
Košice 040 01
Slovak Republic
Tel: +421/55/795 11 00
Fax: +421/55/795 12 22

<http://www.hotel-yasmin.sk/en/>

8th Mid-European Clay Conference



4 – 8 July 2016
Košice, Slovakia

ORGANIZERS

The Slovak Clay Group (<http://www.slovakclaygroup.sk>) on behalf of the clay groups of Croatia, Czech Republic, Germany-Austria-Switzerland, Hungary, Poland

LOCAL ORGANIZING COMMITTEE

Slovak Academy of Sciences

Košice Iveta Štyriaková (chair)
Zuzana Danková
Darina Štyriaková
Jaroslav Šuba

Bratislava Jana Madejová
Peter Komadel
Helena Pálková
Jana Valúchová

Banská Bystrica Adrián Biroň

Comenius University

Bratislava Peter Uhlík
Marek Osacký

IMPORTANT DATES

June 2015 Website of MECC 2016

November 2015 – March 2016 Early registration

January 2016 Abstract submission

AGAIN IN SLOVAKIA AFTER 15 YEARS

Join us at the Mid-European Clay Conference (MECC 2016) to be held on 4-8 July 2016 in Košice.

We hope that you will find interesting all the contributions in the scientific program, enjoy seeing the friends and meeting new colleagues in the clay world.

LIST OF MECC

2001 – [Stará Lesná, Slovakia](#)

2003 – Miskolc, Hungary

2006 – Opatija, Croatia

2008 – Zakopane, Poland

2010 – Budapest, Hungary

2012 – Prague-Průhonice, Czech Republic

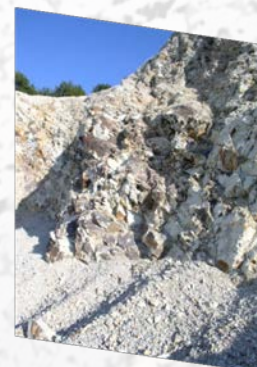
2014 – Dresden, Germany

2016 – [Košice, Slovakia](#)

PRELIMINARY SCIENTIFIC TOPICS

- Structure and properties of clay minerals
- Synthesis and modification of clays
- Functionalized clay minerals
- Geology of clays
- Clay minerals in soils
- Applications of clay minerals
- Clay mineral based nanocomposites
- Analytical tools for clays characterization

...region of vineyards, cellars in rhyolitic tuffs and of wine tasting...



FIELD TRIP

The city is located close to several clay deposits mainly of volcano-sedimentary origin and to the delightful Tokaj wine region.

Deposits

Bentonites: Lastovce (50 km)

Kaolin sands: Rudník (25 km)

Zeolites: Nižný Hrabovec (57 km)

Volcanic glasses: Viničky (73 km)